



# Booth Level Officer e-Patrika



Primary School

Polling  
Station

Voter Slips  
&  
Voter Guide  
BLO

चुनाव का पर्व  
DESH KA GARV  
LOK SABHA ELECTION 2024

A BLO distributes Voter Information Slips and  
Voter Guides in her area.

Volume 11



The Election Commission of India takes immense pride in upholding election integrity by maintaining and adhering to strict protocols and its election machinery.

With the ongoing General Election 2024, ECI and the state election machinery are leaving no stone unturned to make the election truly inclusive, accessible, and participative.

This magnanimous exercise is a team effort of the dedicated ecosystem, with Booth Level Officers (BLOs) serving as ECI ambassadors on the ground, interacting, engaging, and assisting the voters.

## Editorial Committee

N.N. Butolia  
*Senior Principal Secretary  
(Electoral roll)*

Ashok Kumar  
*Director (IT)*

Kuldeep Kumar Saharawat  
*Director (Training),  
IIDEEM*

S. Sundar Rajan  
*Director (EVM)*

Deepali Masirkar  
*Director  
(Election Planning)*

Santosh Ajmera  
*Director (SVEEP)  
Member Convener*

## Editorial Team

R K Singh  
*Coordinator SVEEP*

Anuj Chandak  
*Joint Director Media (SVEEP)*

Rajni Upadhyay  
*Communication Consultant*

Farha Alvi  
*Graphic Designer*

# Role of BLOs on Poll Days

During election time, the role and responsibility of BLOs increase manifold. They must carry out their duties thoroughly to ensure the ease of voters on the day of voting, ultimately aiming to increase voter turnout. The important duties of BLOs include:

## A BLO must have an updated Voter List

The updated voter list should be the prime focus of a BLO. They must ensure that all the eligible voters are included in the list. Furthermore, the BLO must encourage the voters to check their names in the voter list. How to assist the elector in searching for their name in the Voters' List? To cast vote, the elector must have their name in the Voter List.

1 Use Voter Helpline App

2 [voters.eci.gov.in](http://voters.eci.gov.in)

3 SMS to 1950:  
ECI <space> <EPIC NO>

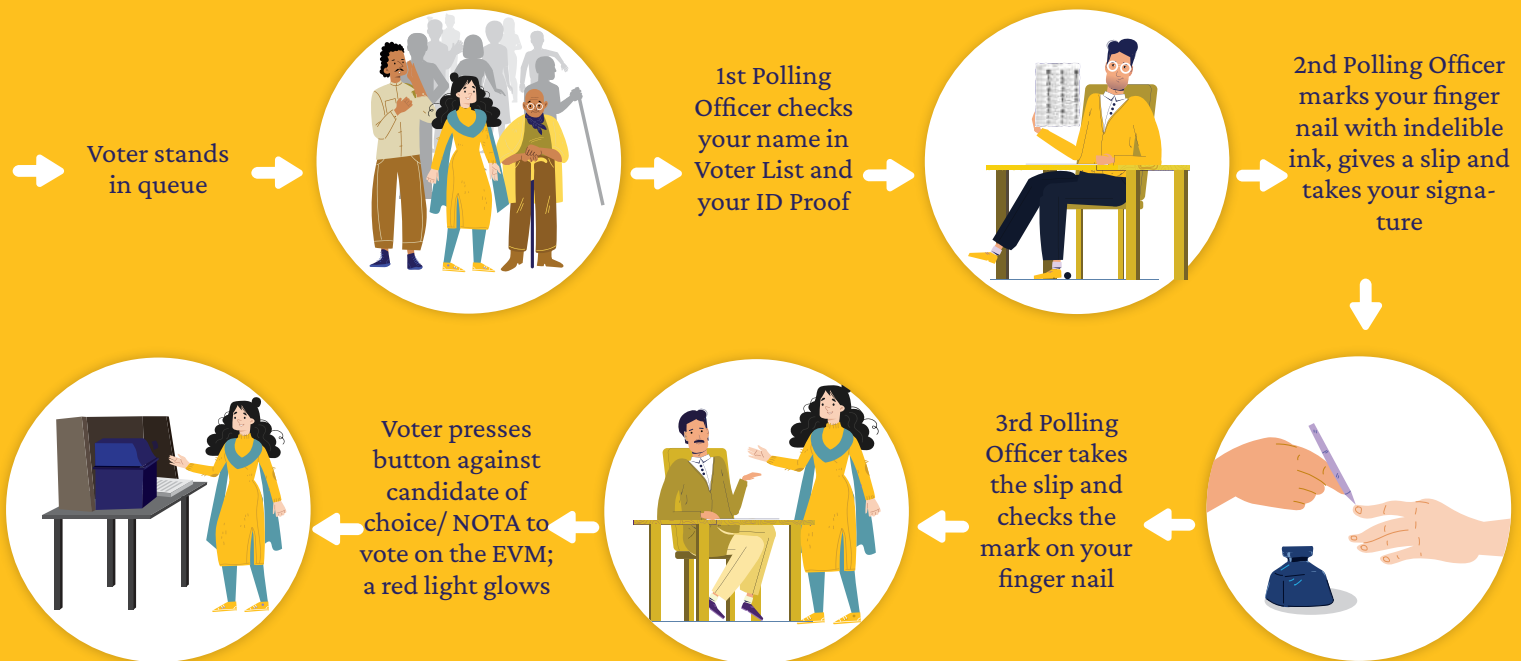
## Facilitating Voter Slip & Distribution of Voters' Guide



Another important role of the BLO, the distribution of Voter Slips to the voters' households before the poll day. The BLOs must ensure 100% distribution of Voter Slips in their area so that the voter is aware of all the important details such as the polling station name, part of the polling booth and date of polling day. The Voter Slip confirms to the voters that their name is on the voter list and they can cast their vote. The BLO must also encourage the voters to cast their vote on the day of polling.

**The BLOs must use this opportunity to empower the voters about the polling process, the ID cards and the process of casting their vote.**

## Polling Process



## Indelible ink

**DO YOU**

**KNOW?**

- The indelible ink is a semi-permanent dye that's applied to the index finger of the left hand of a voter to prevent multiple voting.
- Its purpose is to prevent individuals from voting more than once during an election, thereby helping to maintain the integrity and fairness of the voting process.
- An agreement for exclusive manufacturing of Indelible Ink between CSIR-NRDC and MPVL was entered to this effect. Since then, MPVL has been the sole authorised manufacturer of Indelible Ink in India for the Election Commission of India.
- The Indelible Ink was developed by the National Physical Laboratory (NPL), New Delhi a constituent laboratory of CSIR in 1961 and issued the license to Mysore Paints and Varnish Limited (MPVL) (a Govt. of Karnataka undertaking) in 1962.

# Approved Identity Documents/ID proof for voting

- Voter ID Card (EPIC)
- Aadhaar Card
- Unique Disability ID (UDID) Card
- Smart card issued by RGI under NPR
- Pension Document
- Driving License
- Service Identity Card
- Passport
- Passbook with photo by Bank/Post Oce
- Official identity card issued to MPs/MLAs/MLCs MNREGA Job Card
- Pan Card
- Service Identity Card
- Health Insurance Smart Card (M/o Labour)



SVEEP  
Activities in  
preparation  
of  
Lok Sabha  
2024



## Voters casting their vote in first four phases of elections

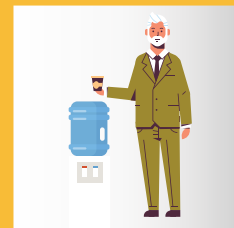


# Promoting Booth-Level Facilities

The Election Commission of India has left no stone unturned in the pursuit of making elections inclusive, accessible and participative. BLO plays a very important part in being the messenger and facilitator of ECI guidelines and mission on the ground. BLO must extensively promote Assured Minimum Facilities at each polling station to encourage voters to feel confident to come in large numbers to the polling station to vote and face no difficulties. The voters should be informed that:



1. Each Polling Station must be on the ground floor, and include Assured Minimum Facilities (AMF) like drinking water, a waiting shed, a toilet with water, proper lighting, ramps for PwD voters, and standard voting compartments.



2. BLOs must ensure all persons with disabilities and senior citizens are identified and tagged to their respective Polling Stations, with necessary disability-specific arrangements for smooth voting.



3. BLOs must inform voters that volunteers will assist identified PwD and senior citizen electors at polling booths



4. Voters must know that proper transport facilities are ensured for PwD and senior citizen electors at every polling station on polling day.



5. PwD electors can request wheelchair facilities by registering on the Saksham-ECI App, as informed by the BLOs.

BLO must inform Electors (senior citizens above 85 years & PwDs with benchmark certificate) that they can avail Home Voting Facility & Postal Ballot Facility by filling Form 12D. Electors employed in essential services can also avail Postal Ballot Facility by submitting Form 12D.

## BLO Ready to Assist at Polling Booths



BLO at Voter Assistance Booth



Medical assistance available at Polling Booth

The BLO must be available at the Help Desk on the day of the Poll for any assistance required by the voter and the voters feel welcomed at their respective polling booth.

# Digital Revolution: Promoting Use of IT Applications During Elections

In the past few years, ECI has embraced digital processes for voter registration, where voters can verify and update their details online. This has enhanced convenience and engagement, ensuring accurate voter rolls. ECI has launched such mobile applications for the comfort of the voters. The BLO must popularise these apps amongst the voters and general public in their respective areas. The popular voter-oriented apps are:

## Voter Helpline App



1. The one-stop solution provides registration and election-related services conveniently in a single platform.
2. You can easily check the details of contesting candidates to make an informed decision.

## cVIGIL App



1. Allows users to report violations of the Model Code of Conduct (MCC)
2. Provides a platform for citizens to participate in the electoral process
3. Uses GPS to track the location of the violation
4. Allows users to capture the live incidents only
5. Tracks the progress of the complaint
6. Feature to report the case of MCC violation anonymously

## Know Your Candidate App



1. It allows voters to search for candidates by their names.
2. It displays information about the candidate's criminal antecedents, if any.
3. It provides information about the status of any criminal cases filed against the candidate.
4. It shows the nature of the offences that the candidate has been accused of.
5. It is available on both Android and iOS platforms.

## Saksham-ECI



- 1 Apply for a new PwD voter card.
2. Mark yourself as a Person with Disability (PwD).
3. Apply for a wheelchair if needed.
4. Accessibility features are built-in

## National Icons of ECI



Sachin Tendulkar, Cricket Legend



Raj kummar Rao, Actor

## The difference between a Model Polling Station and a Unique Polling Station lies primarily in their characteristics and objectives:

- » A Model Polling Station is established to highlight any unique or popular aspect of the area, district or state.
- » Model Polling booths are set up to attract voters to the polling booths and give a festive look to the electoral exercise.
- » Model Polling Stations are decorated thematically with rows of floral hanging, balloons to make the voter feel welcome and important.



**DID YOU  
KNOW?**

**INTERESTING FACT**

### 📍 Model Polling Station:



- » The uniqueness of Unique Polling Station stems from various factors such as geographical location, historical significance, or logistical challenges.

- » Unique Polling Stations may be established in remote or difficult-to-access areas, islands, tribal regions, or areas with unique demographic compositions.
- » The objective of setting up Unique Polling Stations is to ensure that every eligible voter, regardless of their location or circumstances, can exercise their right to vote.
- » Special arrangements and logistical considerations may be made to facilitate voting in Unique Polling Stations, such as transportation assistance, extended polling hours, or innovative communication methods.

### Unique Polling Station: 📍



# A feel of Unique Polling Station

## South Andaman : Dugong Creek Little Andaman ANI PC, 340- Dugong Creek Little

The PS No. 340 is located in Dugong Creek, Little Andaman Islands which belongs to Onges. The Onge Tribe has been in contact with the civilization for just over 100 years. Initially, the Onges inhabited over Little Andaman in different bands but later they settled two places Dugong Creek and South Bay in Little Andaman. After Tsunami of 2004, Onges of South Bay Voluntarily shifted to Dugong Creek, Little Andaman. Dugong Creek holds profound signification for the Onge Tribe, classified as a Particularly Vulnerable Tribal Group (PVTG), and is of high anthropological importance. Efforts by the Election machinery are diligently made to ensure that every citizen has the opportunity to exercise their voting rights. The Polling Party travels two days prior to voting day to take the vote of 68 voters in the isolated island. It takes six hour long journey via ship to reach Little Andaman. Then the party leaves on a dungy (small boat) the next day with polling material for Dugong Creek. It takes one and half hours navigating through a dense creek to reach the Onges settlement. The party stays at the isolated island overnight and carries out the polling process the next day. Despite the remote and isolated location, the Onge people enthusiastically participate in the democratic process which can be assessed from the last General Election.



## Polling Station: Govt. Senior Basic School, Bitra, Lakshadweep

The polling station of Govt. Senior Basic School, Bitra, is situated on the island of Bitra, which is the northwesternmost inhabited island of Lakshadweep. The island has a total population of 293, with a total elector population of 243. Located approximately 125 kilometers from Kavaratti, the district headquarters, reaching the island involves a sea journey of around 6 to 8 hours by ship.

During the General Elections of 2019, the last elections held in the island, the Election Department of Lakshadweep made significant efforts to ensure the smooth conduct of the electoral process. This included arranging a special ship schedule to transport polling materials and personnel to Bitra well in advance, as well as ensuring the timely return of polled Electronic Voting Machines (EVMs)/ VVPATS and other statutory documentation to Kavaratti.

Despite the logistical challenges, the island recorded an impressive voter turnout of 94.50% during the General Elections of 2019, showcasing the commitment of its residents to participate in the democratic process.



# Story from Ground

My name is Madhumala and I am very proud to be the BLO of Booth No. 86, Banjaru Male, Dakshina Kannada which had a 100% voter turnout in the 18th Lok Sabha Election 2024.

Banjaru Male is nestled in the midst of thick forests in Charmadi Ghats, located 125 kms away from Mangaluru. Banjaru Male gets its name because the region was said to be hostile for human settlement.

Banjaru Male, in Neriya gram panchayat, has 111 voters (48 houses) from the indigenous tribal community— Malekudiya. The tribal hamlet has remained out of bounds as there are no proper roads and mobile connectivity. For the first time, a polling booth was set up at the community hall in Banjaru Male in 2015. Until 2015, residents used to travel nearly 20 to 25 kms to exercise their franchise.



I have been serving as BLO at the Banjaru Male polling station for the past six years. I have visited all 48 houses in the hamlet and appealed to residents to ensure 100% voter turnout at the Banjaru Male polling station. I also participated in the festivals to gain the goodwill of residents. For the past few years, I have been striving for Banjaru Male polling station to achieve 100 per cent voter turnout for which all grievances of villagers should be redressed at the earliest.

On the day of voting, April 26th, 2024, all voters (51 male and 60 female voters) exercised their franchise, ensuring a 100 per cent voter turnout at polling station 86.

I feel happy and satisfied by contributing as a BLO in the election festivities.





भारत निर्वाचन आयोग  
Election Commission of India



# Are you an informed voter?

Download the **Know Your Candidate (KYC) App**  
to check the details of each candidate of your  
constituency.

**Be an informed voter!**



Scan QR code to  
watch the 'KYC' film

**Log on to: [elections24.eci.gov.in](https://elections24.eci.gov.in)**



Android



iOS



Scan & download the  
**KYC App now!**



Call Voter Helpline

**1950**



Scan the QR Code to **check**  
**your name in the Voters' List**  
and **Know the Poll Date** in  
your constituency

**#IVoteForSure | #MeraVoteDeshKeLiye**